

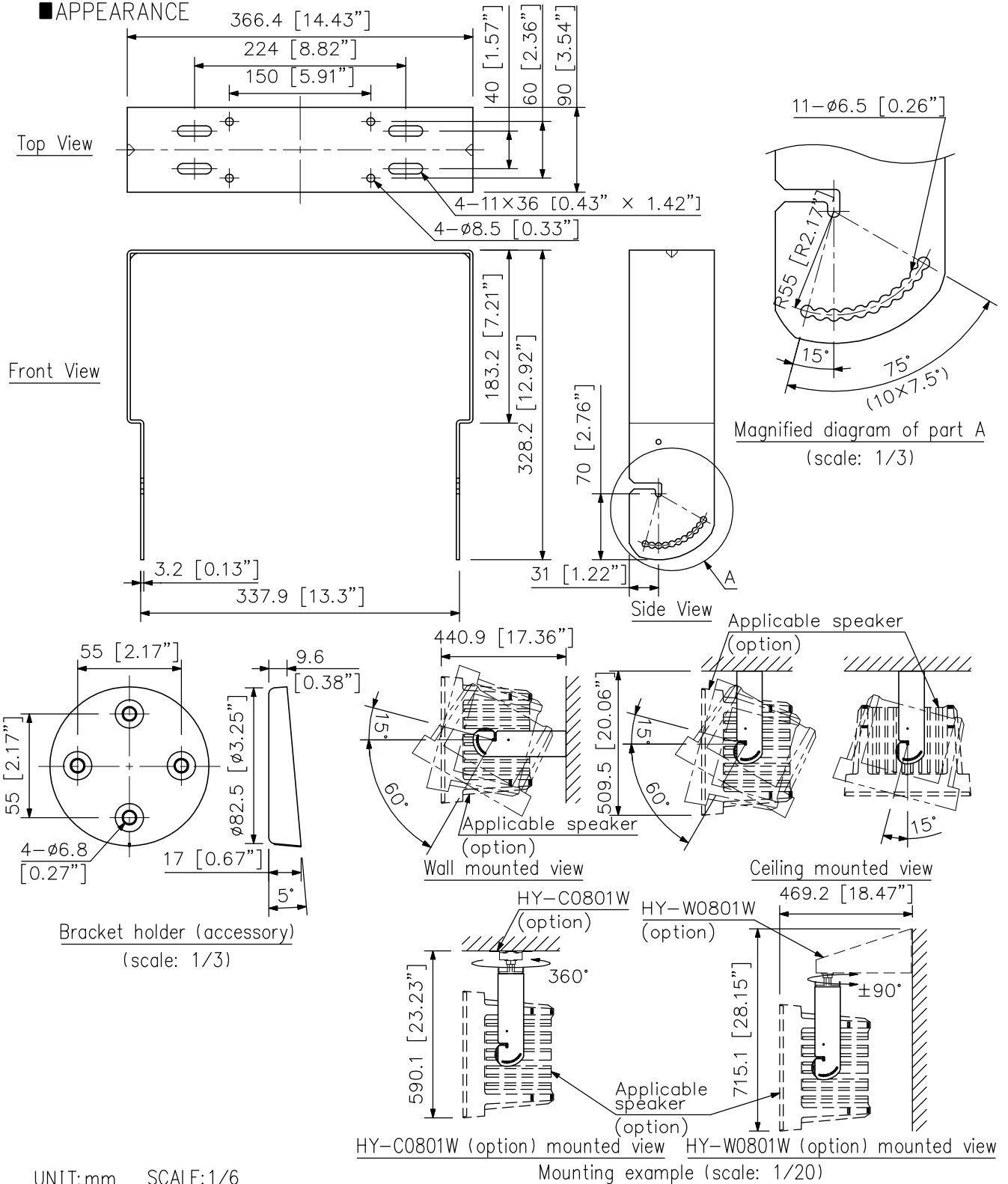
DESCRIPTION

The HY-1200VW Mount Bracket is designed to mount speaker system to a wall or ceiling in a vertical configuration. It allows the speaker orientation angle to be adjusted from 15° upward to 60° downward when mounted on a wall, and from 15° upward to 90° downward when mounted to a ceiling.

SPECIFICATIONS

Finish	Steel plate, white, paint
Dimensions	366.4 (W) × 328.2 (H) × 90 (D) mm (14.43" × 12.92" × 3.54")
Weight	2.2 kg (4.85 lb)
Accessory	Bracket holder *2, Bracket holder mounting screw *4, Speaker mounting screw *4, Nut for the optional bracket *4, Washer for the optional bracket *4
Option	Ceiling mount bracket: HY-C0801W, Wall mount bracket: HY-W0801W
Applicable Speaker (option)	HS-120W, HS-1200WT

APPEARANCE



UNIT:mm SCALE:1/6